



# Antique Character Heartpine

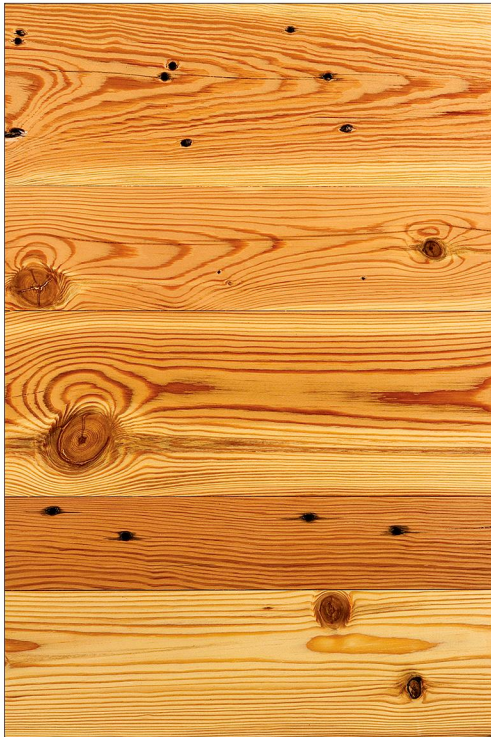
(aka "Heart of Pine")

DOWNLOADABLE  
PRODUCT  
DATA SHEET

## Description

We remill our Antique Character Heartpine flooring from reclaimed factory and warehouse timbers. Planks contain 50% – 100% heartwood, nail holes, tight knots and some checking as evidence of the wood's former life. This is a very durable floor that represents the Classic Heartpine look that works well with both rustic and contemporary decors. with a lot of character and minimum patina.

We are able to supply this product as engineered reclaimed hardwood flooring.



## Installation Methods

- \* On/above grade for solid | On/above/below grade for ERA™ Engineered Flooring
- \* Naildown or gluedown (w/exceptions)
- \* Over in-floor radiant heat (w/exceptions and precautions)

## Solid Flooring Specs

- \* 100% Recycled | Contributes to LEED® MRc3: Material Reuse
- \* Kiln dried to 8%, +/-2% before milling to stabilize/sanitize
- \* Thickness: 3/4" (others available) | Plank Lengths: 2' - 10'
- \* Widths" 3" to 10" (depending on availability) | Typ. sold in 4-width ranges of 3"-6", 4"-7", 5"-8", etc.
- \* Most popular range is 3"-6", i.e. the order will contain 3", 4", 5" and 6" in varying (random) amounts
- \* End-matching is standard | Beveling is optional (no charge)
- \* Unfinished, prefinishing is optional. (See "Prefinishing Options" section.)

## ERA™ Engineered Flooring Specs

- \* Wear layers are kiln-dried to 8%, +/-2% before being bonded to a multi-layer, Baltic Birch substrate
- \* CARB-II / TSCA Title VI Compliant!
- \* Standard wear layer: 4 mm | Standard overall thickness: 5/8" (below 8" width) | Thicknesses of 7/16", 1/2" and 3/4" are options w/3/4" used on all widths of 8" and up
- \* Widths: Typ. sold 4"-6" (no 3"), 4"-7", 5"-8", etc.
- \* Standard plank length: 2' - 10'
- \* End-matching is standard | Beveling is optional (no charge)
- \* Can be installed on, above or below grade by nail- or glue-down method. Please discuss your installation with us beforehand.

## Prefinishing Options

- \* Available on most orders over 250 SF
- \* Finish types: UV-catalyzed nano particle AIOx urethane or WOCA Natural (plant-based) Oil
- \* Standard stains/colors are available. Custom-matching is available.
- \* Contact us for pricing.

## Where To Use This Flooring

- \* Residences
- \* Commercial applications

Aged Woods, Inc. - York, PA  
(800) 233-9307 (U.S. & Canada) (717) 840-0330  
<https://www.agedwoods.com>

*"Eco-friendly floors since 1983"*

Copyright © 1996-2024 Aged Woods, Inc. | All Rights Reserved